

# Antonio Vivaldi (1675-1741)

## Concerto per Oboe e Violino Concertante

Instituto Italiano Antonio Vivaldi: Tomo 73: F. XII n.16 (1949)

Parts Extracted by Charles-David Lehrer

**Violino Concertante** **Allegro.**

1 16 2

21

23

26

30 9

42

44

46

48

50

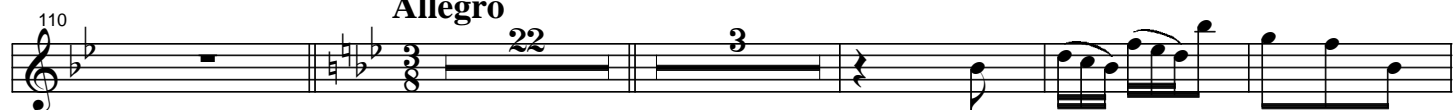
53 3



**Largo.**



**Allegro**



146

153

173

180

187

204

212

219

22

The image displays a page of musical notation, likely for a piano or guitar, in G major (one sharp). The notation is organized into seven staves, each beginning with a measure number. The first staff starts at measure 146 and continues with various eighth and sixteenth note patterns, some grouped with slurs. The second staff starts at measure 153 and includes a measure rest for 14 measures. The third staff starts at measure 173 and continues with similar rhythmic patterns. The fourth staff starts at measure 180 and features a measure rest for 9 measures followed by a measure rest for 3 measures. The fifth staff starts at measure 187 and continues with eighth and sixteenth note patterns. The sixth staff starts at measure 204 and continues with similar rhythmic patterns. The seventh staff starts at measure 212 and continues with eighth and sixteenth note patterns. The final staff starts at measure 219 and ends with a measure rest for 22 measures.