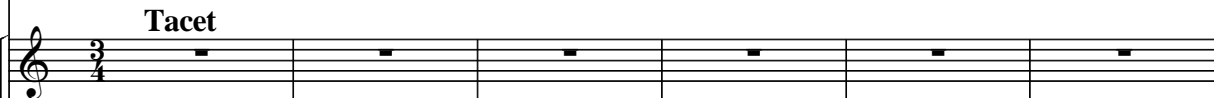


Adagio.

Oboe Principal



Corno I in F



Corno II in F



Violino I



Violino II



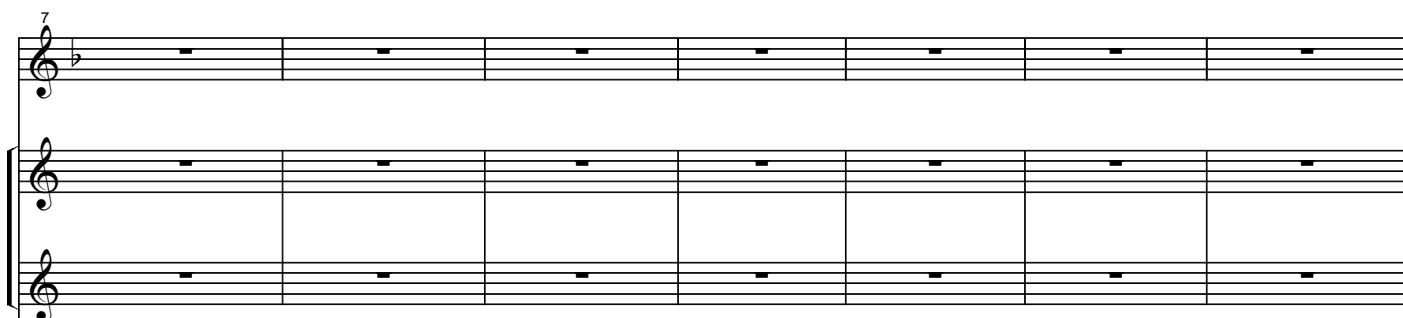
Viola



Violoncello



Contrabasso



14

p

14

f *p* *f* *p* *p*

21

f *p* *p*

27

This system contains measures 27 through 34. The top staff features a melodic line in G minor, starting with a triplet of eighth notes (G4, A4, B4) and a dotted quarter note (C5), followed by a half note (B4), a quarter note (A4), and a half note (G4). Measures 28-30 are whole rests. Measures 31-32 contain eighth-note pairs (F4-G4, E4-F4, D4-E4). Measures 33-34 contain a triplet of eighth notes (G4, A4, B4) and a dotted quarter note (C5).

27

This system contains measures 27 through 34. The top staff features a melodic line in G minor, starting with a half note (G4), a quarter note (A4), and a half note (B4). Measures 28-30 are whole rests. Measures 31-32 contain eighth-note pairs (F4-G4, E4-F4, D4-E4). Measures 33-34 contain a triplet of eighth notes (G4, A4, B4) and a dotted quarter note (C5).

35

This system contains measures 35 through 40. The top staff features a melodic line in G minor, starting with a triplet of eighth notes (G4, A4, B4) and a dotted quarter note (C5), followed by a half note (B4), a quarter note (A4), and a half note (G4). Measures 36-38 are whole rests. Measures 39-40 contain eighth-note pairs (F4-G4, E4-F4, D4-E4).

35

This system contains measures 35 through 40. The top staff features a melodic line in G minor, starting with a half note (G4), a quarter note (A4), and a half note (B4). Measures 36-38 are whole rests. Measures 39-40 contain eighth-note pairs (F4-G4, E4-F4, D4-E4).

41

41

f *p*

f *p*

f

47

47

f *p*

54

Measures 54-59. Treble clef staff with a melodic line in B-flat major. Piano and bass staves are empty.

54

Measures 54-59. Treble and bass staves with a piano accompaniment. Bass clef staff has a *p* dynamic marking.

60

Measures 60-65. Treble clef staff with a melodic line. Piano and bass staves are empty.

60

Measures 60-65. Treble and bass staves with a piano accompaniment. Bass clef staff has a *p* dynamic marking.

The image displays a musical score for the song "The Rose Tree". It consists of two systems of staves. The first system includes a vocal line (treble clef) and two piano accompaniment staves (treble and bass clefs). The second system includes a vocal line (treble clef), a piano accompaniment staff (treble clef), and a bass line (bass clef). The key signature is one flat (B-flat), and the time signature is 4/4. The score begins with a measure number of 66. The vocal line features a melody with various note values, including eighth and sixteenth notes, and rests. The piano accompaniment provides harmonic support with chords and moving lines. The bass line is primarily composed of whole notes and rests. The score concludes with a final measure marked with a double bar line.

Cadenza

The image displays a page of a musical score, specifically the Cadenza section of the first movement of the Piano Concerto in G major, Op. 34, by Franz Liszt. The score is written for a piano and orchestra. The piano part is written on multiple staves, and the orchestral accompaniment is written on a full set of staves. The tempo is marked 'Allegretto' and the key signature is one flat (F major/C minor). The score includes dynamic markings such as 'f' (forte) and 'p' (piano). The Cadenza section is indicated by a bracket at the top of the first staff. The score is in 2/4 time. The piano part features complex rhythmic patterns, including sixteenth and thirty-second notes, and dynamic markings like 'f' and 'p'. The orchestral accompaniment provides a harmonic and rhythmic foundation for the piano solo. The score is a high-quality reproduction of the original manuscript, with clear notation and legible text.