

Georg Philipp Telemann (1681-1767)

Musique de Table (1733)

Quatuor in G Major

Denkmäler deutscher Tonkunst: Volumes 61-62

Parts extracted by Charles-David Lehrer

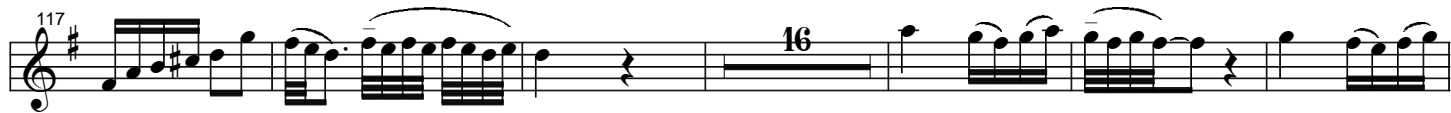
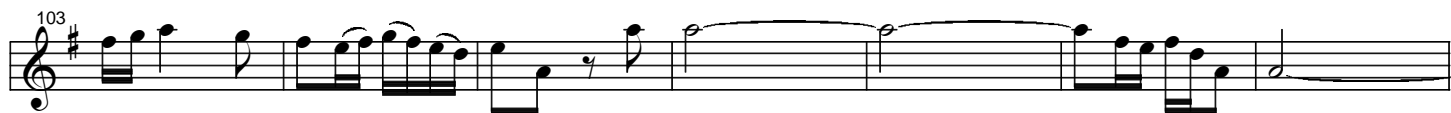
Largo.

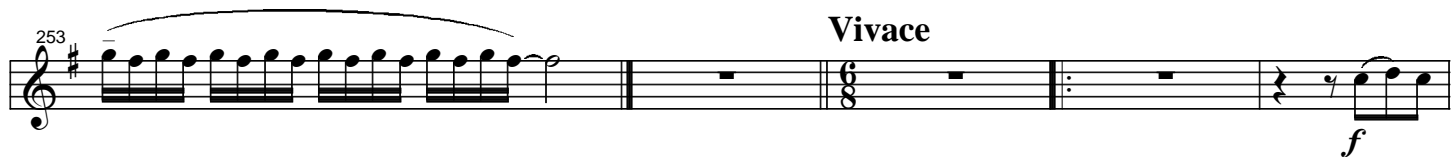
Oboe

f

Allegro.

The musical score for the Oboe part of Telemann's Quatuor in G Major, Musique de Table (1733), is presented in a single system. The score is in G major (one sharp) and 12/8 time. It begins with a Largo section (measures 1-11) and transitions to an Allegro section (measures 12-39). The Oboe part is marked with a forte (f) dynamic. The score includes various musical notations such as slurs, ties, and dynamic markings.





265

272

278

284

290

296

302

308

314

321

328

334

341

1st 2nd

1st 2nd