

Eugène Jancourt (1815-1901)
1er Solo pour le Basson, Op. 23 (1856)

a son Ami HAEUSSER

Orchestration by Charles-David Lehrer

1 **Maestoso.**

Violoncelle

ff *p*

6 *pp* *fz*

11 *ff*

16 **Andante con moto amabile.**

pp *Rall.*

22 *Suivez* *Sec*

29 *p* *Rall.*

35 **a Tempo primo.** *pp* *ff*

40 *f* *pp* *ff Serrez*

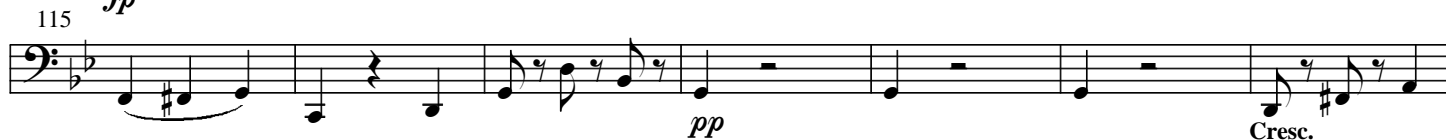
46 *Suivez* *pp* *p*

52 **a Tempo primo.** *Suivez* *pp*

57 *p* *f* *p*

63

Piu allegro. Grazioso



134

141

147

152

157

162

166

172

178

184

189

195

201

pp *p* **Allegro.** *Rall.* *ff*

Allegro maestoso. *fp* *mf*

pp *f* *ff* *ff* **Allegro moderato.** *p* **Poco ritenuto**

ff *pp* *p*

f *ff* *p*

ff **Poco ritenuto** *p*

Detailed description: This is a page of musical notation for a bass clef instrument, likely a cello or double bass, in the key of D major (indicated by two sharps). The page contains measures 134 through 201. The notation includes various rhythmic values such as eighth, sixteenth, and thirty-second notes, as well as rests. Dynamics are indicated by letters like *pp* (pianissimo), *p* (piano), *f* (forte), *ff* (fortissimo), *fp* (forzando), and *mf* (mezzo-forte). Tempo and mood markings include **Allegro.**, **Allegro moderato.**, and **Poco ritenuto**. There are also performance markings like *Rall.* (Ritardando) and *ff* (fortissimo) with a fermata. The music shows a variety of textures, from rapid sixteenth-note passages to slower, more melodic lines with rests.

207 a Tempo primo.

Cresc.

213

ff