

Georg Feldmayr (1756-c.1818)

Oboe Concerto in F Major (c.1790)

Oettingen Wallerstein Collection

Edition by Charles-David Lehrer

Allegro assai.

Violoncello

1 *f* *fp*

6

12 *f*

17 *fp*

22 *f*

27

32 *fp*

37 *f*

42

48 *fp*

54 *f*



142 *f* *f*

Staff 142-153: Bass clef, key of B-flat major. Measures 142-153. Measure 142 starts with a forte (*f*) dynamic. Measure 153 ends with a forte (*f*) dynamic. The staff contains various rhythmic patterns including eighth and sixteenth notes, and rests.

154 *p* Rinforz.

Staff 154-159: Bass clef, key of B-flat major. Measures 154-159. Measure 154 starts with a piano (*p*) dynamic. Measure 159 ends with a forte (*f*) dynamic. The staff contains various rhythmic patterns including eighth and sixteenth notes, and rests.

160

Staff 160-165: Bass clef, key of B-flat major. Measures 160-165. The staff contains various rhythmic patterns including eighth and sixteenth notes, and rests.

166

Staff 166-170: Bass clef, key of B-flat major. Measures 166-170. The staff contains various rhythmic patterns including eighth and sixteenth notes, and rests.

171 *p* Cresc.

Staff 171-175: Bass clef, key of B-flat major. Measures 171-175. Measure 171 starts with a piano (*p*) dynamic. Measure 175 ends with a forte (*f*) dynamic. The staff contains various rhythmic patterns including eighth and sixteenth notes, and rests.

176 *f* *p*

Staff 176-181: Bass clef, key of B-flat major. Measures 176-181. Measure 176 starts with a forte (*f*) dynamic. Measure 181 ends with a piano (*p*) dynamic. The staff contains various rhythmic patterns including eighth and sixteenth notes, and rests.

182

Staff 182-188: Bass clef, key of B-flat major. Measures 182-188. The staff contains various rhythmic patterns including eighth and sixteenth notes, and rests.

189 *2*

Staff 189-196: Bass clef, key of B-flat major. Measures 189-196. Measure 189 starts with a piano (*p*) dynamic. Measure 196 ends with a forte (*f*) dynamic. The staff contains various rhythmic patterns including eighth and sixteenth notes, and rests.

197 *f*

Staff 197-203: Bass clef, key of B-flat major. Measures 197-203. Measure 197 starts with a forte (*f*) dynamic. Measure 203 ends with a forte (*f*) dynamic. The staff contains various rhythmic patterns including eighth and sixteenth notes, and rests.

204 *4* *p*

Staff 204-212: Bass clef, key of B-flat major. Measures 204-212. Measure 204 starts with a piano (*p*) dynamic. Measure 212 ends with a forte (*f*) dynamic. The staff contains various rhythmic patterns including eighth and sixteenth notes, and rests.

213

Staff 213-219: Bass clef, key of B-flat major. Measures 213-219. The staff contains various rhythmic patterns including eighth and sixteenth notes, and rests.

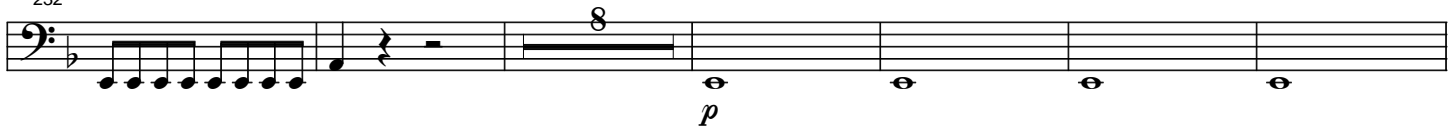
220

Staff 220-225: Bass clef, key of B-flat major. Measures 220-225. The staff contains various rhythmic patterns including eighth and sixteenth notes, and rests.

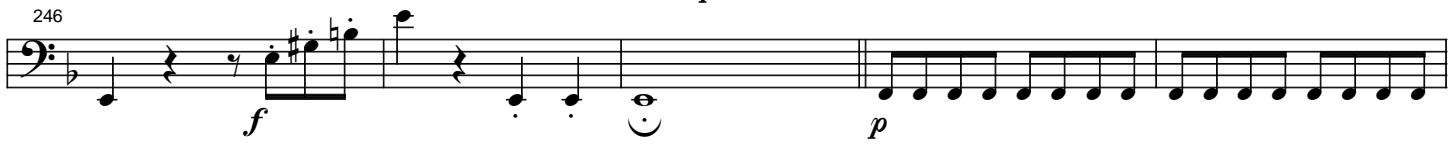
226 *f* *f*

Staff 226-231: Bass clef, key of B-flat major. Measures 226-231. Measure 226 starts with a forte (*f*) dynamic. Measure 231 ends with a forte (*f*) dynamic. The staff contains various rhythmic patterns including eighth and sixteenth notes, and rests.

232



246



251



256

