

Fagotto II

Ludwig van Beethoven (1770-1827)

Parthia in Eb Major (Bonn c. 1792)

Parts extracted from
Ludwig van Beethovens Werke, Series 8: Breitkopf & Härtel (1864-90)
by Charles-David Lehrer

Allegro. Alla breve.

Fagotto II

1 4

10 3

19 ff

25 6

38 p

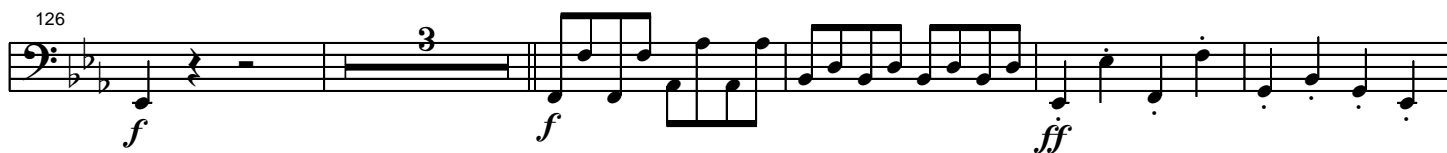
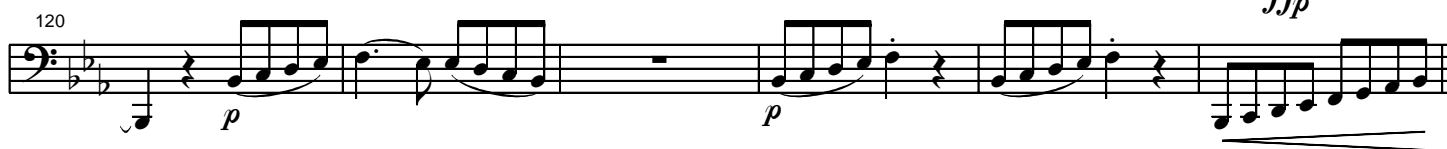
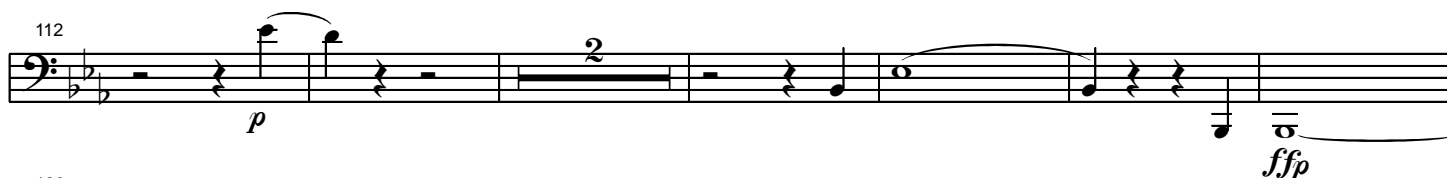
44 f sf sf ff

51 p f

56 sf ff p

63 f sf sf sf ff

69 1st 2nd ff p ff



162

p *ff*

Staff 162-170: Bass clef, key signature of two flats. Measures 162-170. Measure 162 starts with a half note G2, followed by rests. Measure 163 has a half note A2. Measure 164 has a half note Bb2. Measure 165 has a half note C3. Measure 166 has a half note D3. Measure 167 has a half note E3. Measure 168 has a half note F3. Measure 169 has a half note G3. Measure 170 has a half note A3. Dynamics: *p* at the start, *ff* at the end. A fermata is over the final note.

171

p

Staff 171-176: Bass clef, key signature of two flats. Measures 171-176. Measure 171 starts with a half note G2, followed by rests. Measure 172 has a half note A2. Measure 173 has a half note Bb2. Measure 174 has a half note C3. Measure 175 has a half note D3. Measure 176 has a half note E3. Dynamics: *p* at the start. A fermata is over the final note.

177

ff *p*

Staff 177-184: Bass clef, key signature of two flats. Measures 177-184. Measure 177 starts with a half note G2, followed by rests. Measure 178 has a half note A2. Measure 179 has a half note Bb2. Measure 180 has a half note C3. Measure 181 has a half note D3. Measure 182 has a half note E3. Measure 183 has a half note F3. Measure 184 has a half note G3. Dynamics: *ff* at the start, *p* at the end. A fermata is over the final note.

185

p

Staff 185-189: Bass clef, key signature of two flats. Measures 185-189. Measure 185 starts with a half note G2, followed by rests. Measure 186 has a half note A2. Measure 187 has a half note Bb2. Measure 188 has a half note C3. Measure 189 has a half note D3. Dynamics: *p* at the start. A fermata is over the final note.

190

ff *sf* *sf* *sf* *sf* *p*

Staff 190-194: Bass clef, key signature of two flats. Measures 190-194. Measure 190 starts with a half note G2, followed by rests. Measure 191 has a half note A2. Measure 192 has a half note Bb2. Measure 193 has a half note C3. Measure 194 has a half note D3. Dynamics: *ff* at the start, *sf* at the end. A fermata is over the final note.