

Organo

George Frederick Handel (1685-1759)

Concerti Grossi Op. 3

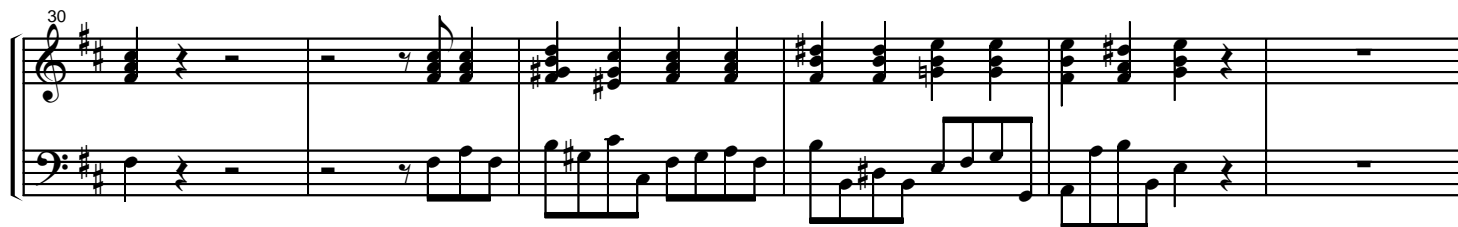
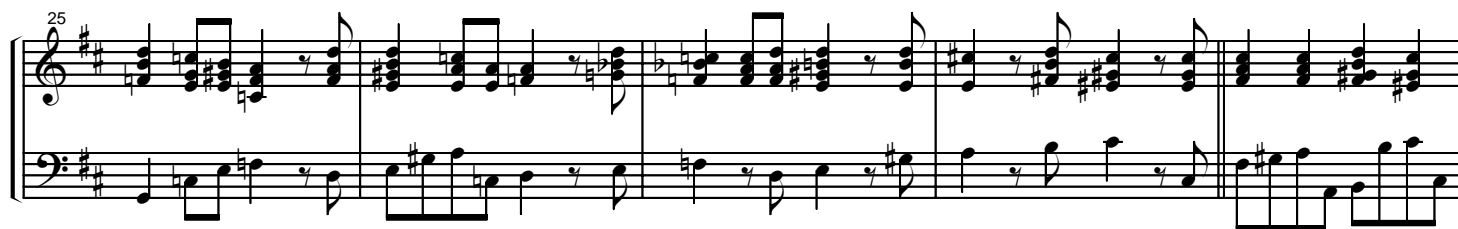
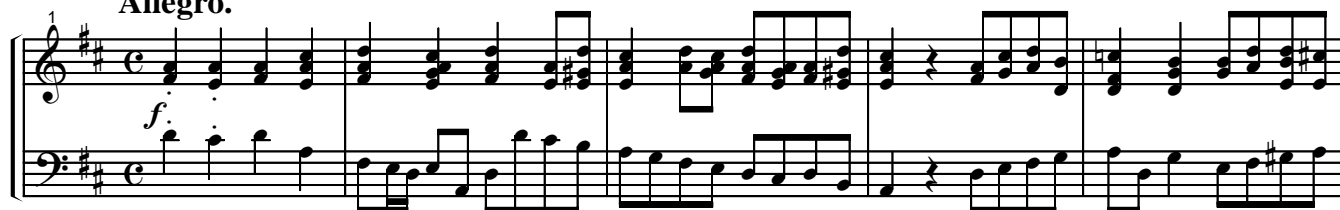
Concerto No. 6 in D Major/D Minor (London 1723/1734)

Edition of the German Handel Society (Leipzig: 1865)

Parts extracted by Charles-David Lehrer

Allegro.

Organo



36

Measures 36-41. Treble clef: Chords in D major. Bass clef: A moving line of eighth and sixteenth notes.

42

Measures 42-47. Treble clef: Chords in D major. Bass clef: A moving line of eighth and sixteenth notes.

48

Measures 48-53. Treble clef: Chords in D major. Bass clef: A moving line of eighth and sixteenth notes.

54

Measures 54-62. Treble clef: Chords in D major. Bass clef: A moving line of eighth and sixteenth notes. Measure 59 has a 4-measure rest in both staves.

63

Measures 63-68. Treble clef: Chords in D major. Bass clef: A moving line of eighth and sixteenth notes.

69

Measures 69-74. Treble clef: Chords in D major. Bass clef: A moving line of eighth and sixteenth notes.

75

Allegro.

Measures 75-80. Treble clef: Chords in D major. Bass clef: A moving line of eighth and sixteenth notes. Measure 79 has a 4-measure rest in both staves. Measure 80 is a double bar line.

81

System 1 (measures 81-87). The right hand features a complex texture with chords and sixteenth-note runs. The left hand provides a steady bass line with eighth notes.

88

System 2 (measures 88-95). The right hand continues with sixteenth-note patterns and chords. The left hand maintains a consistent eighth-note bass line.

96

System 3 (measures 96-102). The right hand has a more active melodic line with frequent sixteenth-note runs. The left hand continues with eighth notes.

103

System 4 (measures 103-109). The right hand features a series of sixteenth-note runs. The left hand has a more varied bass line with some rests.

110

Pedal

System 5 (measures 110-116). The right hand has a complex texture with chords and sixteenth notes. The left hand has a steady eighth-note bass line. A "Pedal" marking is present above the right hand staff.

117

System 6 (measures 117-124). The right hand continues with sixteenth-note patterns. The left hand has a steady eighth-note bass line.

125

System 7 (measures 125-131). The right hand features a series of sixteenth-note runs. The left hand has a steady eighth-note bass line.

133

Pedal

140

147

154

161

169

176

Pedal